

# LED Wall Lamp



01



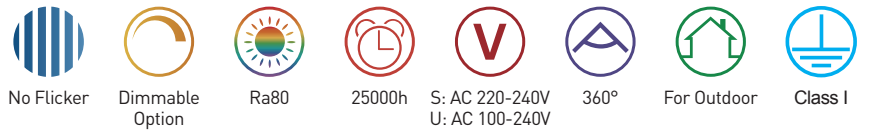
XGYWL-1411



XGYWL-1411-PIR



XGYWL-1411-PHOTOCELL



Model No. 产品规格	Dimension LxWxH(mm)	Rated Power 额定功率	Lumen Efficacy 光效	Color Temp 色温	Body Material 材质	PF 功率因素	PCS/CTN 装箱数量	CTN MEAS. 装箱尺寸(cm)
XGYWL-1411	183*85*90	GU10 x2 Rating	GU10 Rating	3000K	ABS+PC ABS+Glass	0.5	16	42*40*19
XGYWL-1411-PIR	220*68*106	GU10 x2 Rating	GU10 Rating	3000K	ABS+PC ABS+Glass	0.5	12	36.5*24.5*32
XGYWL-1411-PHOTOCELL	220*68*106	GU10 x2 Rating	GU10 Rating	3000K	ABS+PC ABS+Glass	0.5	12	36.5*24.5*32



IP44



### XGYWL-1393

Rated Power 额定功率	Lumen Efficacy 光效	Equipment Class 电器级别
GU10 x1 Rating	GU10 Rating	Class I
Body Material 材质	Color Temp. 色温	PF 功率因素
ABS+PC Alu+Glass	3000K	0.5
Dimension LxWxH(mm)	PCS/CTN 装箱数量	CTN MEAS. 装箱尺寸
85*68*95	24	34*29*23



IP44



### XGYWL-1393-2

Rated Power 额定功率	Lumen Efficacy 光效	Equipment Class 电器级别
GU10 x1 Rating	GU10 Rating	Class I
Body Material 材质	Color Temp. 色温	PF 功率因素
ABS+PC Alu+Glass	3000K	0.5
Dimension LxWxH(mm)	PCS/CTN 装箱数量	CTN MEAS. 装箱尺寸
85*68*95	24	34*29*23



IP44



### XGYWL-1394

Rated Power 额定功率	Lumen Efficacy 光效	Equipment Class 电器级别
GU10 x2 Rating	GU10 Rating	Class I
Body Material 材质	Color Temp. 色温	PF 功率因素
ABS+PC Alu+Glass	3000K	0.5
Dimension LxWxH(mm)	PCS/CTN 装箱数量	CTN MEAS. 装箱尺寸
150*68*95	12	34*34*23



IP44

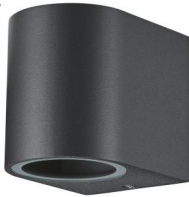


### XGYWL-1394-2

Rated Power 额定功率	Lumen Efficacy 光效	Equipment Class 电器级别
GU10 x2 Rating	GU10 Rating	Class I
Body Material 材质	Color Temp. 色温	PF 功率因素
ABS+PC Alu+Glass	3000K	0.5
Dimension LxWxH(mm)	PCS/CTN 装箱数量	CTN MEAS. 装箱尺寸
150*68*95	12	34*34*23



IP44



### XGYWL-1391

Rated Power 额定功率	Lumen Efficacy 光效	Equipment Class 电器级别
GU10 x1 Rating	GU10 Rating	Class I
Body Material 材质	Color Temp. 色温	PF 功率因素
ABS+PC Alu+Glass	3000K	0.5
Dimension LxWxH(mm)	PCS/CTN 装箱数量	CTN MEAS. 装箱尺寸
85*68*95	24	34*29*23



IP44



### XGYWL-1391-2

Rated Power 额定功率	Lumen Efficacy 光效	Equipment Class 电器级别
GU10 x1 Rating	GU10 Rating	Class I
Body Material 材质	Color Temp. 色温	PF 功率因素
ABS+PC Alu+Glass	3000K	0.5
Dimension LxWxH(mm)	PCS/CTN 装箱数量	CTN MEAS. 装箱尺寸
85*68*95	24	34*29*23



IP44



### XGYWL-1392

Rated Power 额定功率	Lumen Efficacy 光效	Equipment Class 电器级别
GU10 x2 Rating	GU10 Rating	Class I
Body Material 材质	Color Temp. 色温	PF 功率因素
ABS+PC Alu+Glass	3000K	0.5
Dimension LxWxH(mm)	PCS/CTN 装箱数量	CTN MEAS. 装箱尺寸
150*68*95	12	34*34*23



IP44



### XGYWL-1392-2

Rated Power 额定功率	Lumen Efficacy 光效	Equipment Class 电器级别
GU10 x2 Rating	GU10 Rating	Class I
Body Material 材质	Color Temp. 色温	PF 功率因素
ABS+PC Alu+Glass	3000K	0.5
Dimension LxWxH(mm)	PCS/CTN 装箱数量	CTN MEAS. 装箱尺寸
150*68*95	12	34*34*23



IP44



### XGYWL-1412

Rated Power 额定功率	Lumen Efficacy 光效	Equipment Class 电器级别
GU10 x1 Rating	GU10 Rating	Class I
Body Material 材质	Color Temp. 色温	PF 功率因素
ABS+PC Alu+Glass	3000K	0.5
Dimension LxWxH(mm)	PCS/CTN 装箱数量	CTN MEAS. 装箱尺寸
120*85*90	24	40*32*27.5



IP44



### XGYWL-1412-PHOTOCELL

Rated Power 额定功率	Lumen Efficacy 光效	Equipment Class 电器级别
GU10 x1 Rating	GU10 Rating	Class I
Body Material 材质	Color Temp. 色温	PF 功率因素
ABS+PC Alu+Glass	3000K	0.5
Dimension LxWxH(mm)	PCS/CTN 装箱数量	CTN MEAS. 装箱尺寸
165*68*106	12	36.5*32*19



IP44



### XGYWL-1412-PIR

Rated Power 额定功率	Lumen Efficacy 光效	Equipment Class 电器级别
GU10 x1 Rating	GU10 Rating	Class I
Body Material 材质	Color Temp. 色温	PF 功率因素
ABS+PC Alu+Glass	3000K	0.5
Dimension LxWxH(mm)	PCS/CTN 装箱数量	CTN MEAS. 装箱尺寸
165*68*106	12	36.5*32*19



IP54



### XGYWL-1351

Rated Power 额定功率	Lumen Efficacy 光效	Equipment Class 电器级别
2*3W	240	Class I
Body Material 材质	Color Temp. 色温	PF 功率因素
Alu+Glass	3000K	0.8
Dimension LxWxH(mm)	PCS/CTN 装箱数量	CTN MEAS. 装箱尺寸
115*90*29	32	42*22*26

03



IP54



### XGYWL-1352

Rated Power 额定功率	Lumen Efficacy 光效	Equipment Class 电器级别
2*6W	480	Class I
Body Material 材质	Color Temp. 色温	PF 功率因素
Alu+Glass	3000K	0.8
Dimension LxWxH(mm)	PCS/CTN 装箱数量	CTN MEAS. 装箱尺寸
175*90*29	16	42*22*20



IP54



### XGYWL-1241

Rated Power 额定功率	Lumen Efficacy 光效	Equipment Class 电器级别
2*3W	240	Class I
Body Material 材质	Color Temp. 色温	PF 功率因素
Alu+Glass	3000K	0.8
Dimension LxWxH(mm)	PCS/CTN 装箱数量	CTN MEAS. 装箱尺寸
200*160*60	12	44*36*23



IP54

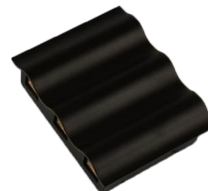


### XGYWL-1241B

Rated Power 额定功率	Lumen Efficacy 光效	Equipment Class 电器级别
2*3W	240	Class I
Body Material 材质	Color Temp. 色温	PF 功率因素
Alu+Glass	3000K	0.8
Dimension LxWxH(mm)	PCS/CTN 装箱数量	CTN MEAS. 装箱尺寸
200*160*60	12	44*36*23



IP54

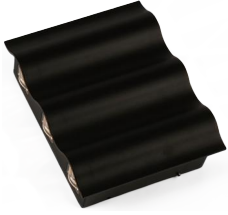


### XGYWL-1242

Rated Power 额定功率	Lumen Efficacy 光效	Equipment Class 电器级别
6*2W	500	Class I
Body Material 材质	Color Temp. 色温	PF 功率因素
Alu+Glass	3000K	0.8
Dimension LxWxH(mm)	PCS/CTN 装箱数量	CTN MEAS. 装箱尺寸
200*160*60	12	44*36*23



IP54



### XGYWL-1242B

Rated Power 额定功率	Lumen Efficacy 光效	Equipment Class 电器级别
6*2W	500	Class I
Body Material 材质	Color Temp. 色温	PF 功率因素
Alu+Glass	3000K	0.8
Dimension LxWxH(mm)	PCS/CTN 装箱数量	CTN MEAS. 装箱尺寸
200*160*60	12	44*36*23



IP54

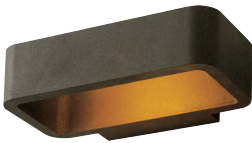


### XGYWL-1243

Rated Power 额定功率	Lumen Efficacy 光效	Equipment Class 电器级别
4*2W	350	Class I
Body Material 材质	Color Temp. 色温	PF 功率因素
Alu+Glass	3000K	0.8
Dimension LxWxH(mm)	PCS/CTN 装箱数量	CTN MEAS. 装箱尺寸
200*160*60	12	44*36*23



IP54

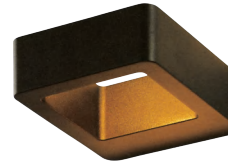


### XGYW-1261

Rated Power 额定功率	Lumen Efficacy 光效	Equipment Class 电器级别
7W	250	Class I
Body Material 材质	Color Temp. 色温	PF 功率因素
Alu+Glass	3000K	0.8
Dimension LxWxH(mm)	PCS/CTN 装箱数量	CTN MEAS. 装箱尺寸
218*85*55	12	44*36*23



IP54



### XGYWL-1271

Rated Power 额定功率	Lumen Efficacy 光效	Equipment Class 电器级别
7W	250	Class I
Body Material 材质	Color Temp. 色温	PF 功率因素
Alu+Glass	3000K	0.8
Dimension LxWxH(mm)	PCS/CTN 装箱数量	CTN MEAS. 装箱尺寸
120*144*45	15	34.5*30.5*25



IP54



### XGYWL-6151

Rated Power 额定功率	Lumen Efficacy 光效	Equipment Class 电器级别
E27 x1 Rating	E27 Rating	Class I
Body Material 材质	Color Temp. 色温	PF 功率因素
Alu+PC	3000K	0.5
Dimension LxWxH(mm)	PCS/CTN 装箱数量	CTN MEAS. 装箱尺寸
167*108*80	6	29*19.5*26



IP54



### XGYWL-6152

Rated Power 额定功率	Lumen Efficacy 光效	Equipment Class 电器级别
E27 x1 Rating	E27 Rating	Class I
Body Material 材质	Color Temp. 色温	PF 功率因素
Alu+PC	3000K	0.5
Dimension LxWxH(mm)	PCS/CTN 装箱数量	CTN MEAS. 装箱尺寸
167*108*80	6	29*19.5*26



IP54



### XGYWL-5951-PIR

Rated Power 额定功率	Lumen Efficacy 光效	Equipment Class 电器级别
E27 x1 Rating	E27 Rating	Class I
Body Material 材质	Color Temp. 色温	PF 功率因素
Alu+PC	3000K	0.5
Dimension LxWxH(mm)	PCS/CTN 装箱数量	CTN MEAS. 装箱尺寸
240*160*105	8	45*37*27



IP54



### XGYWL-5931

Rated Power 额定功率	Lumen Efficacy 光效	Equipment Class 电器级别
E27 x1 Rating	E27 Rating	Class I
Body Material 材质	Color Temp. 色温	PF 功率因素
Alu+PC	3000K	0.5
Dimension LxWxH(mm)	PCS/CTN 装箱数量	CTN MEAS. 装箱尺寸
245*140*110	2	30*29.5*16